

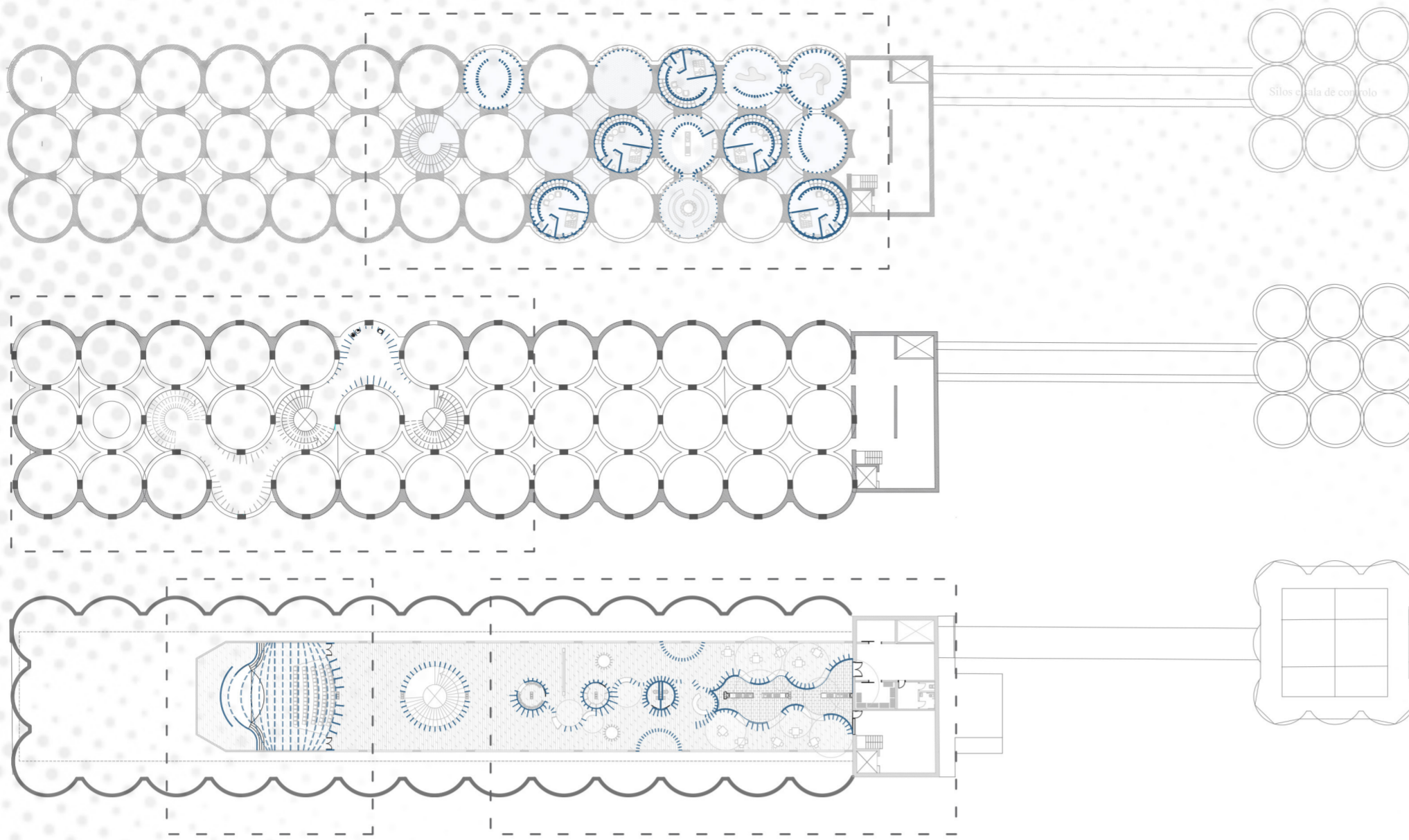
SYSTEM SCHEME

PLADUR BOARDS ARE USED IN THE CONTINUOS SYSTEM IN ORDER TO GENERATE DIFFERENT QUALITIES AND SENSATIONS OF SPACES

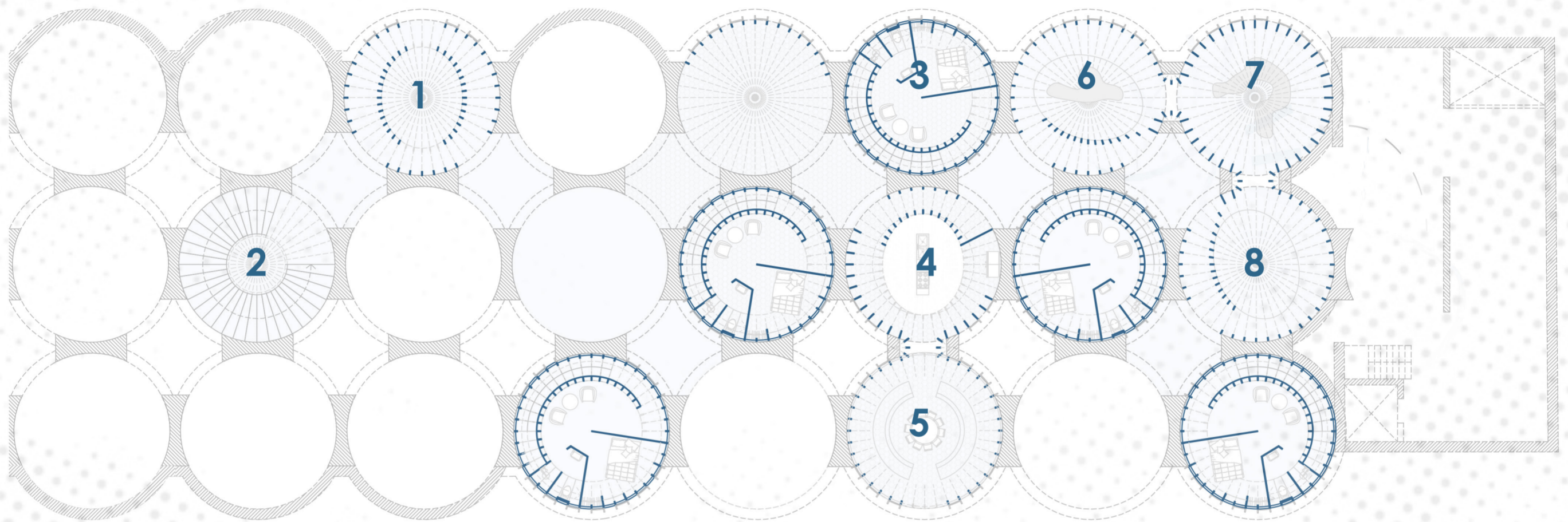
EXTERIOR RENDER. STUDENT RESIDENCE ENTRANCE.

PROGRAMME:

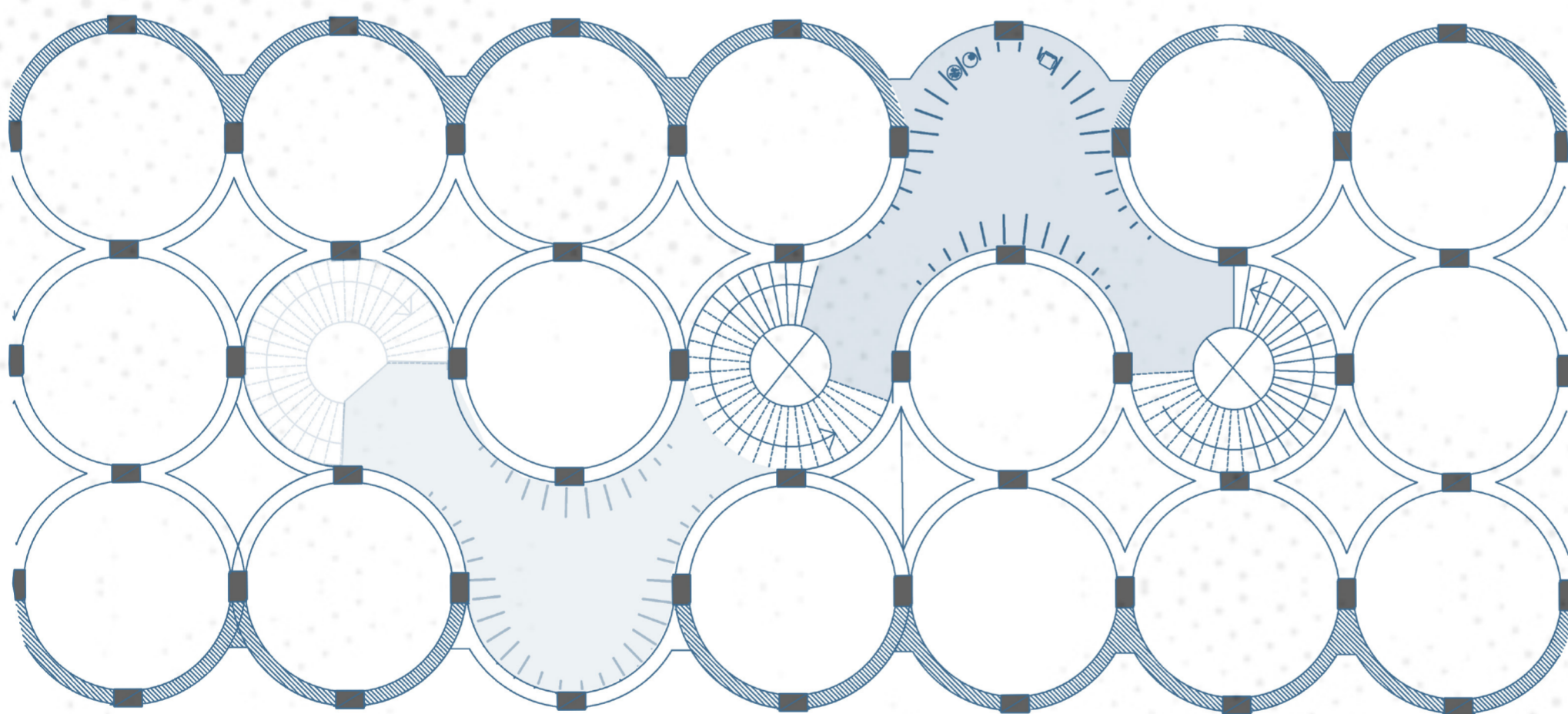
1. ENTRANCE
2. VERTICAL ACCESS
3. RESIDENCE UNITS
4. COMMUNAL KITCHEN
5. DINING ROOM
6. READING SPACE
7. RELAXATION SPACE
8. CAFE AREA
9. ACCESS PATH/EXHIBITION
10. AUDITORIUM/ BLACK BOX
11. WARDROBE ROOM
12. STORAGE UNIT
13. PUBLIC RESTROOM
14. EXHIBIT CONTINUATION
15. RESTAURANT OPEN KITCHEN
16. RESTAURANT SPACE
17. EMERGENCY EXIT
18. COLD ROOM
19. WORKER'S RESTROOM
20. CHANGING ROOM



GROUND FLOOR

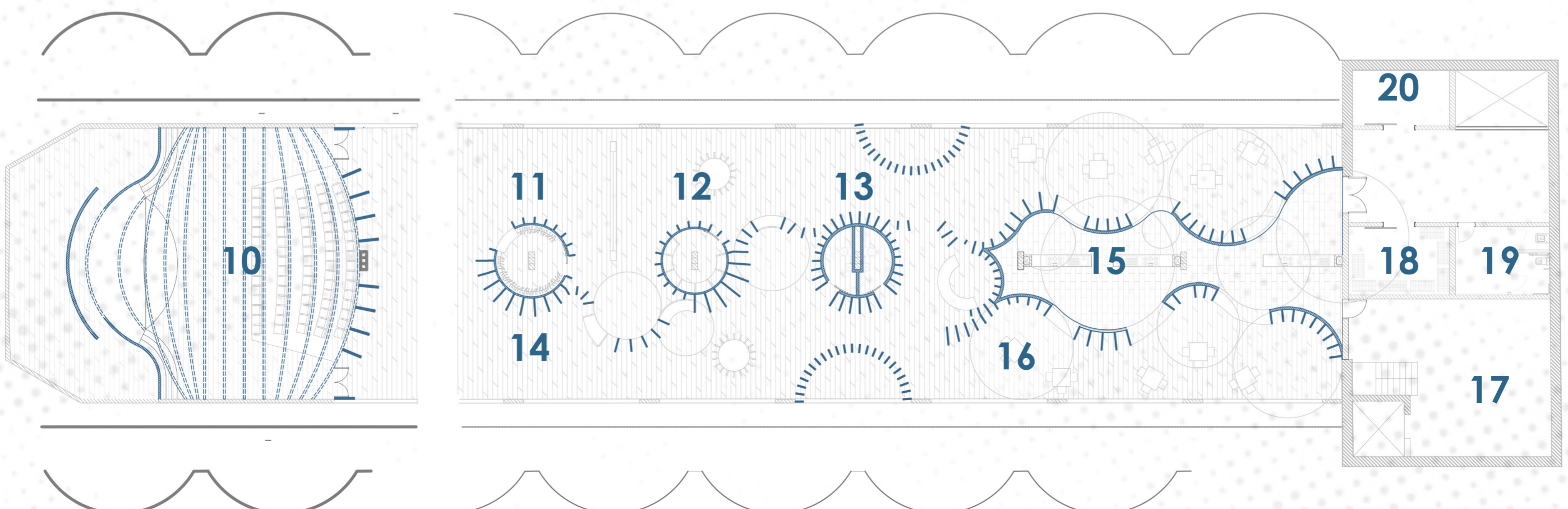


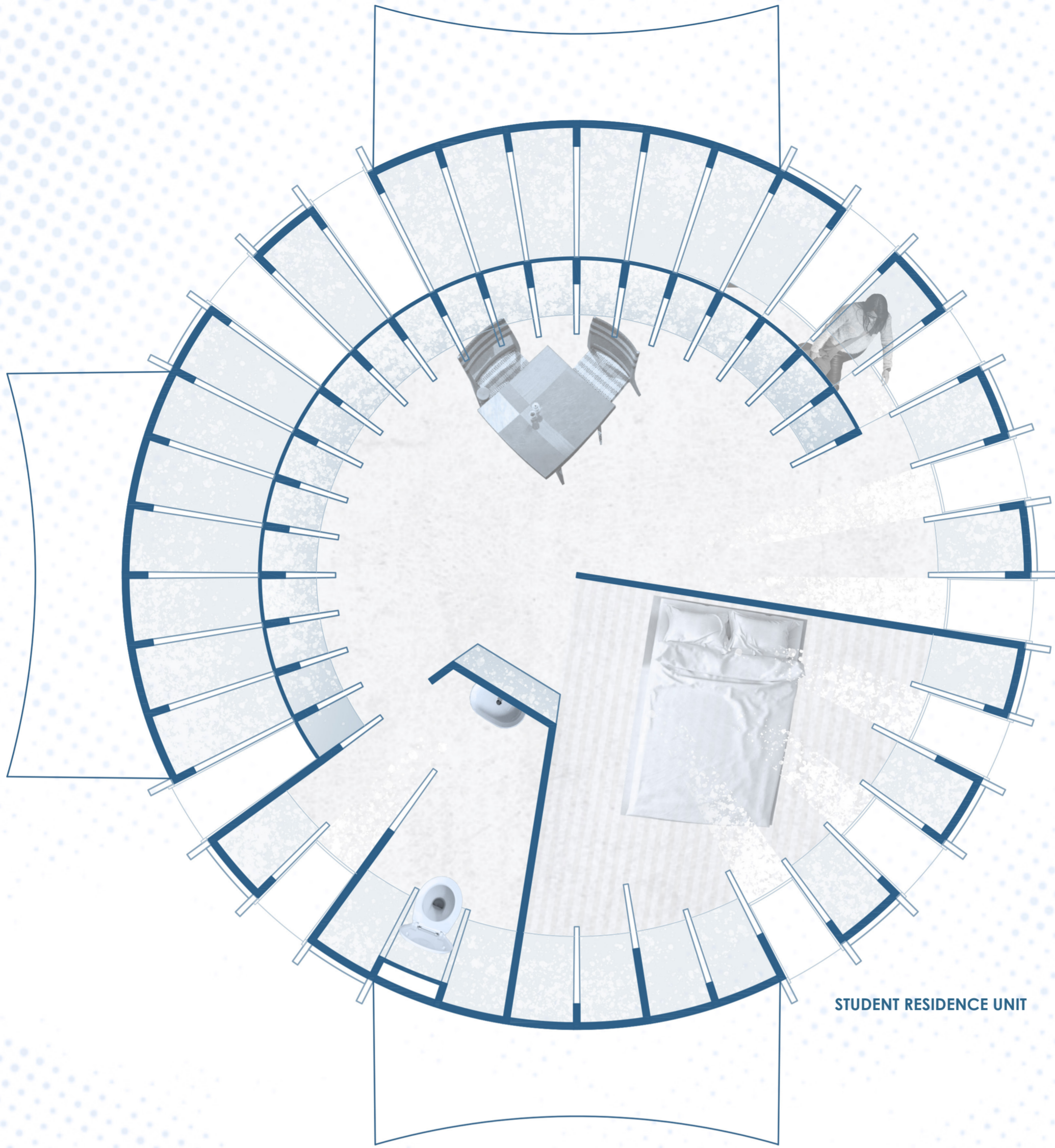
INTERMEDIATE FLOOR



SCHEMATIC DISTRIBUTION

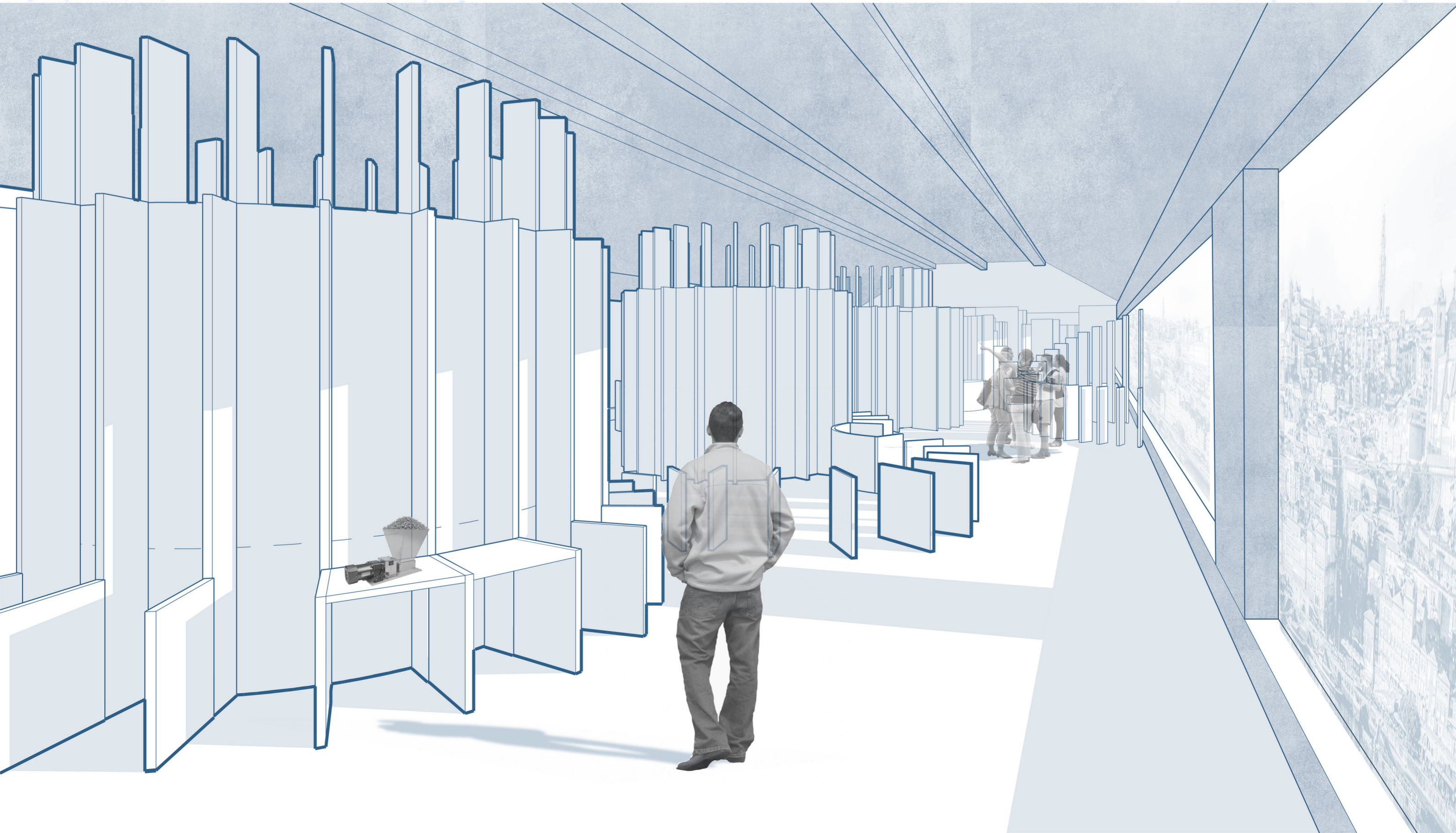
TOP FLOOR

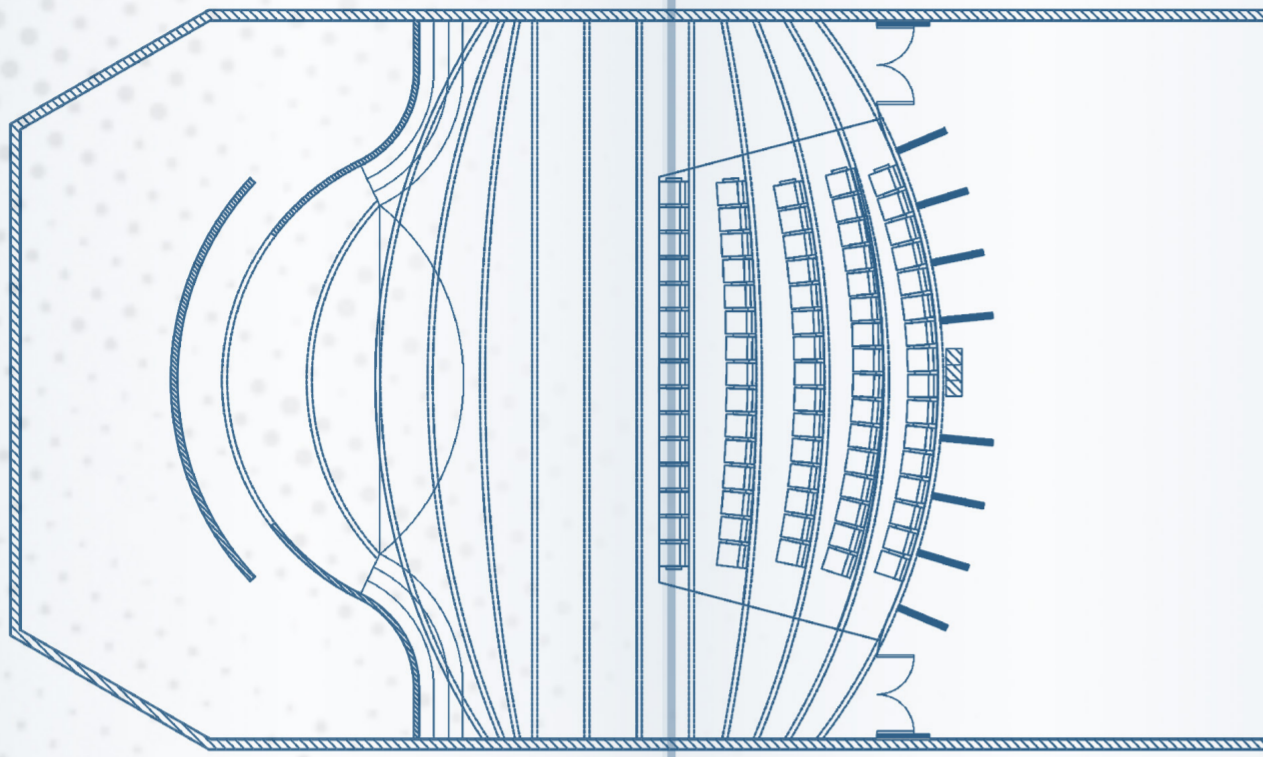
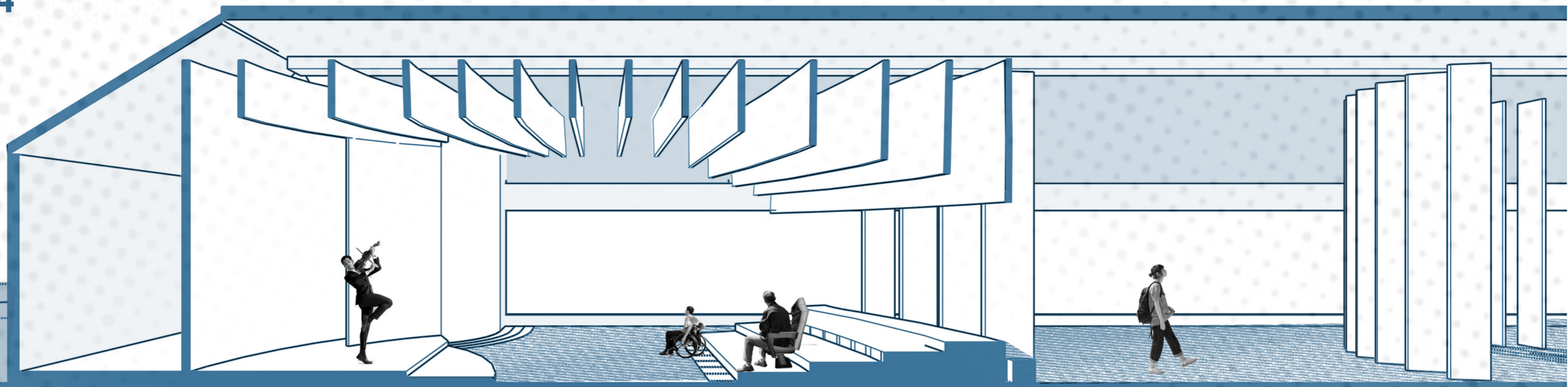




STUDENT RESIDENCE UNIT

TOP FLOOR MUSEUM AND RESTAURANT
SPACE QUALITY

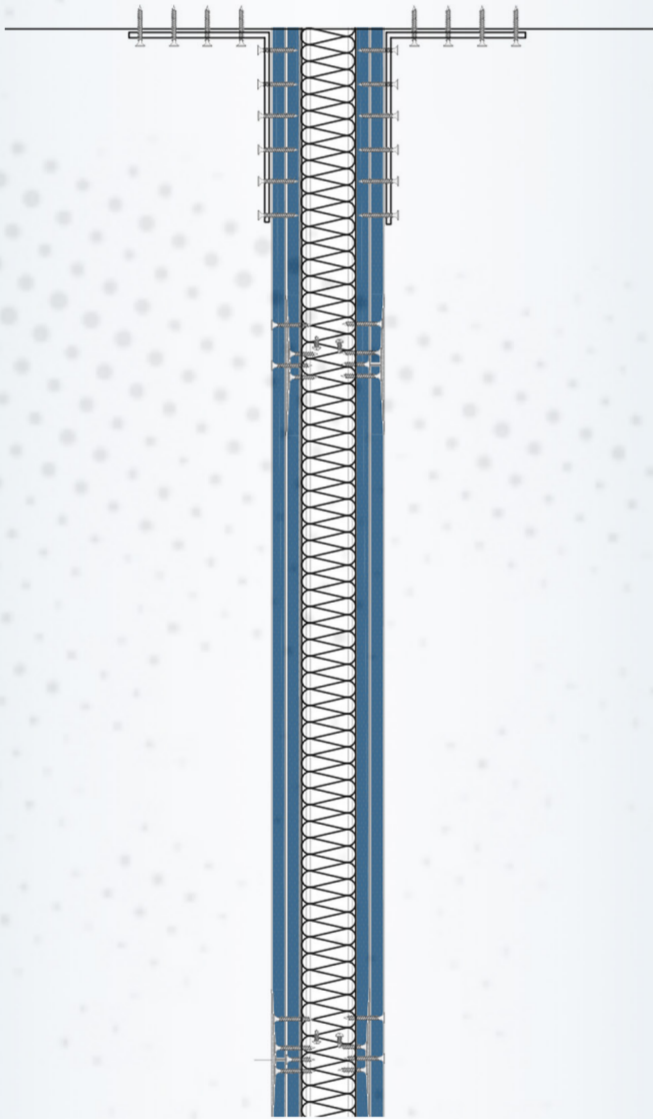
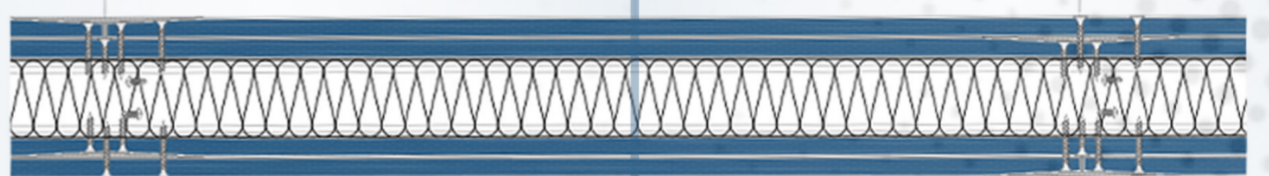




CONSTRUCTION DETAIL. DECORATIVE ELEMENT USED IN THE MAJORITY OF THE PROJECT.



CONSTRUCTION DETAIL. ELEMENT USED TO SEPARATE SPACES SUCH AS BEDROOMS.



THREE TYPES OF PLADUR SYSTEMS WILL BE USED IN THIS PROJECT. THE MAJORITY WILL BE A USED AS A DECORATIVE ELEMENT, WHERE THE TWO SLICES OF PLADUR WILL WE ATTACHED BY METAL FRAME AND SCREWS TO CREATE A MORE STABLE ELEMENT STRETCHING, UP TO 8 METERS. THIS ELEMENT WILL BE USED IN THE MUSEUM AREA ON THE STAIRS, AROUND THE RESTAURANT IN THE UPPER FLOOR AND MORE. AS WELL, THIS SYSTEM WILL BE HIDING INSTALLATIONS WHEN THEY ARE NECESSARY, AND SERVE AS AN INTEGRATIVE ELEMENT TO ADAPT FURNITURE.

SECOND TYPE IS SIMILAR TO THE PREVIOUS BUT WILL CONTAIN AN INSULATION INBETWEEN PLADUR PANALS TO ENSURE MORE COMFORTABLE ENVIROMENT INSIDE BEDROOMS AND OTHER SEMI-PRIVATE SAPCES.

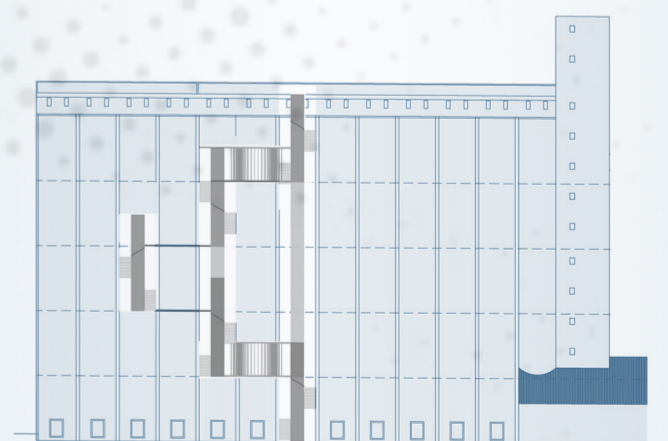
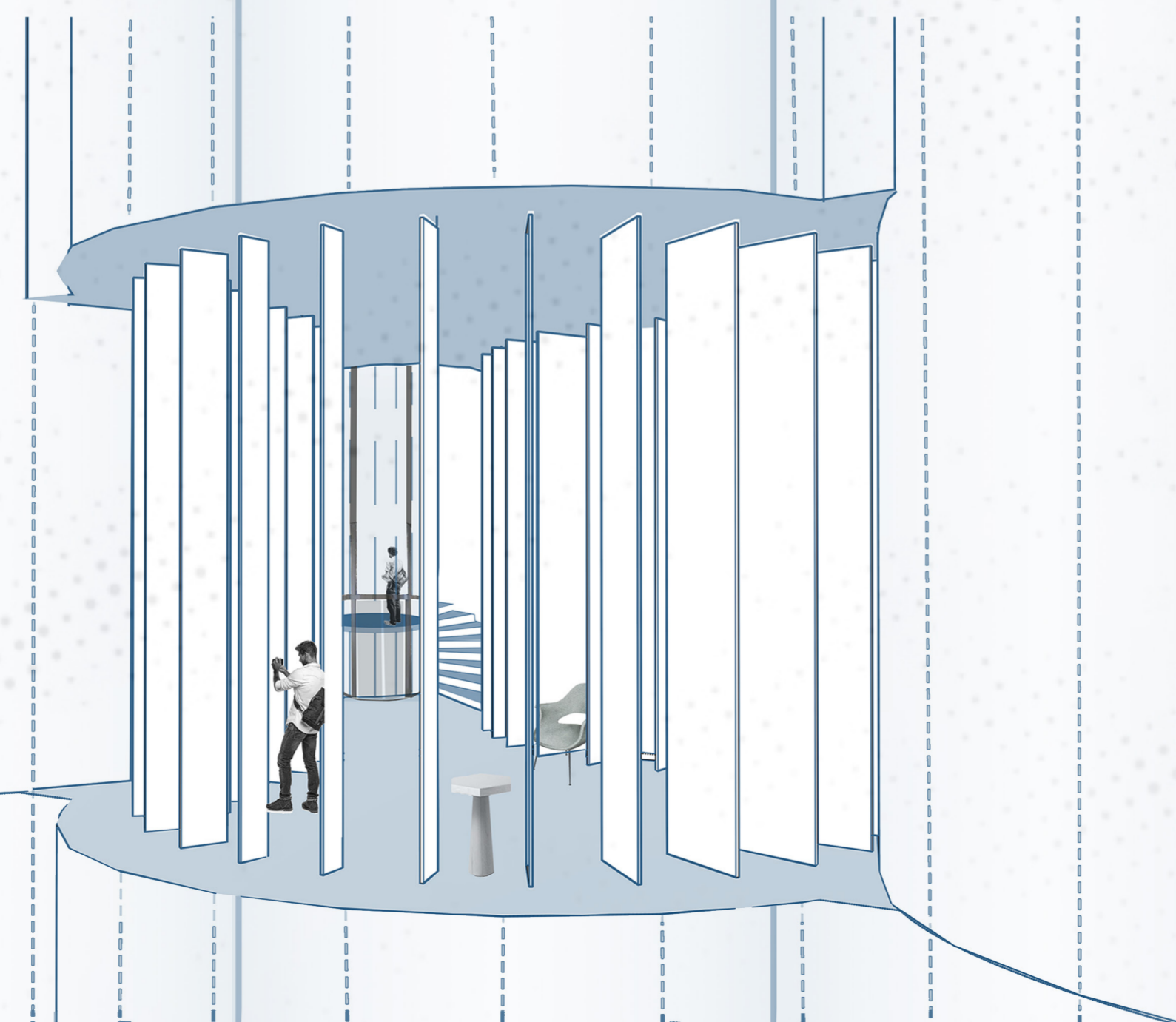
LASTLY, THE BLACK BOX, WILL HAVE CURVED PLADUR ELEMENT HANGING FROM THE ABOVE, ATTACHED BY SCREWS AND ENSURE THE NOISE CONTROL FOR BETTER EXPERIENCE.

PLADUR PRICE.

TABIQUE PLADUR® 146/600 (48-35+E+48-35) 4N 2MW
ARRIOSTRADO - 107 169.80 € FOR 3 013,4 M²

PREFORMADO PLADUR FLEXIFORM
11 676, 72 € FOR 264 M²

TOTAL 118 846.52 €



THE INTRODUCTION OF THE NEW PATH TO ACCESS THE UPPER FLOOR IS INTRODUCING THE INTERMEDIANTE ELEMENTS, SERVING AS A PLATFORM THE SIZE OF SILOS, THAT ARE LOCATED EVERY 12 METERS VERTIVALLY TO CREATE A INTERACTIVE SPACE THAT SURVES AS, OBSERVATION POINT, MUSEUM AND A RESTING POINT BETWEEN STAIRS. THE ACCESS TO THESE PLATFORMS ARE MADE THROUGH SPIRAL STAIRS, OR A GLASS ROUND ELEVATOR.

THE PLATFORMS ARE DECORATED USING THE THIN PLADUR VERTIVAL ELEMENTS. FROM BOTTOM TO CEILING AND LOCATED IN ARRAY MANNEY WITH A SPAN OF 1 METERS, IN BETWEEN WHICH YOU CAN SOMETIME FIND ELEMENTS SUCH AS TABLES FOR DISPLAYING ELEMENTS RELATED TO THE GRAIN MUSEUM, AND CHAIRS FOR RESTING.