

XXXIII PLADUR® CONSTRUCTION SOLUTIONS COMPETITION

COMPETITION TERMS AND CONDITIONS

ORGANISING BODY

PLADUR®, a brand leader in laminated plasterboard systems, is organising its its yearly **Pladur®** Construction Solutions Competition for the 33rd year running.

AIM OF THE EVENT

The **33rd Pladur® Competition is a reflection on the “Adaptive Reuse”,** renovation and conservation of industrial heritage.

Adaptive reuse is an aesthetic process in which a building is adapted for new uses, conserving its historic qualities. The model prolongs the useful life of a building, conserving all or part of its construction system, including the structure, shell, façade and even its internal materials.

Reusing and modernising an existing building not only saves on material resources, it also reduces the environmental footprint and it avoids embedded carbon emissions, i.e. emissions from the industrial process that produced it.

“There is nothing more radically ecological that reusing a whole abandoned building”

PARTICIPANTS AND REGISTRATION

Registration is free.

Participation is open to all students officially enrolled in years 1, 2, 3, 4, 5 of architecture degrees, on bachelors’ thesis and on the so-called “enabling” master’s degrees at all higher technical schools and architecture faculties in Spain and Portugal registered in this year’s competition.

First and second-year students may only participate **as part of a team** in which the other members are 3rd year students or higher. They may not participate individually. Only one 1st or 2nd-year student may participate per group.

Projects may be presented individually or as a team, with a **maximum of three representatives per team**, in which case the participation codes of all members must be provided when delivering the project.

Teams can be made up of students from different schools, but only one school may be represented, which will be chosen by the students.

Presentation of competition entries requires each team member to first register in the **REGISTRATION** section of the competition microsite (www.concursopladur.com).

Once registered, each student will receive an email with a participation code that must be included when presenting the project.

Everyone who registers will be given a free BIM initiation course worth €100. Once registered, they will receive an email with free access to the course.

The mechanics of digital delivery are explained below.

*If you are a competition participant, we recommend you follow us on our social media (**Twitter** @Concurso_Pladur / **Facebook**: [Pladur Spain Construction Solutions Competition](#) / **Instagram**: [pladur_awards](#), as they will provide full information on news, dates and deliveries.

PRIZE CATEGORIES AND MONEY

LOCAL PRIZES

The following local prizes will be awarded at each school/university.

Local Architecture First Prize consisting of:

- Official diploma (for each member) and €400 (per project)
- Invitation to and participation in the **Iberian Pladur® Prize**.
- Networking with local winners, coordinators and jury members.
- One of the members of the local winning team will join the local jury of the university in the following year's competition (unless they are participating, in which case the place will be taken by the second-placed prize winner).
- Publicity in digital media and press releases and publicity on social media and the **Pladur®** website.
- **Participation in the Pladur® Awards Touring Exhibition, which will go to all the participating schools in the following year.**

If over 10 projects are presented, a first and second prize will be chosen. The 2nd prize will be €400, but the project will not pass on to the final.

1 Architecture Second Prize

- Official diploma (each member).
- Publicity on the social media and the **Pladur®** website.

Local BIM prize

- Official diploma (each member).
- Invitation to the awards ceremony.
- Publicity on the social media and the **Pladur®** website.

The local first prize may also compete for the local BIM.

For the jury to meet and decide on the local prizes, at least three projects must be presented at the university/school. If not, the presented projects will be sent to a committee made up of the school and **Pladur®**, who will decide whether the proposal is good enough to be the local representative in the final or should go the inter-school phase, where the jury will decide which projects should go on to the final phase, being considered as the local prize winner to all intents and purposes.

The inter-school jury will award the local prize and one or two second prizes, if the number of projects presented is more than 10 (the two first prizes and two second prizes may not be awarded to the same university).

IBERIAN PRIZES

The winners of the first local prize at each school/university will compete in the following prize categories:

– One **Prize for the Best Iberian Architecture Project** which includes the following.

- Trophy.
- Diploma for each member of the group.
- €6000 per project.
- Interview, report, publicity in the media and on **Pladur®** social media
- Invitation to join the jury for the Best Architecture Project in the 33rd competition (1 member per group)*.
- Invitation to the awards ceremony for the 33rd competition (for 2 people)**.
- Presentation of the Prize for the Best Architecture Project together with the **Pladur®** CEO.

****Pladur®** will cover the travel costs and 1 night in a hotel, if required.*

*****Pladur®** will cover the travel costs, if required.*

-One **Best Construction Solution Prize** consisting of the following:

- Trophy.
- €3000 per project.
- Diploma for each member of the group.
- Media publicity, interviews and **Pladur®** social media.

Iberian BIM Mention

- Trophy.
- €1000 per project.
- Individual diploma.
- Media publicity, interviews and **Pladur®** social media.

The winning project in the Best Architecture Project category cannot compete for the Best Construction Solution prize, but it can compete for the **BIM** Mention, as long as it is also the local BIM prize winner.

Everyone who registers will be given a free **BIM** initiation course worth €100. Once registered, they will receive an email with free access to the course.

PRESENTATION REQUIREMENTS

The project will be delivered in digital format via the Pladur Prize platform. It will consist of a maximum of three or four A2 panels.

Below are some brief recommendations on the information each panel should contain.

PANEL 1

Development of the project idea. Location, orientation and relation to the surroundings.

PANEL 2

Proposed draft project. The exterior should be a basic design.

Floor/s, elevations and sections that clearly characterise the work, along with infographics or images, or photos of models (models will not be accepted, only photos).

In this case, students may choose to use two panels instead of one.

PANEL 3

Construction details of the **Pladur®** systems (partition walls, wall linings, ceilings, etc.) which make up one of the spaces in the project, as chosen by the students.

Arguments to support the type of **Pladur®** board chosen to lead the project in accordance with the design requirements.

The chosen boards will be part of a system and their composition must be incorporated in the plans for this panel (use our support material).

To compete for the **Pladur® BIM** special mention, an IFC model of the project using the **Pladur® BIM** objects must also be delivered, along with the rest of the materials. The IFC must be checked to ensure it contains the **Pladur®** systems with their names and information.

ASSESSMENT CRITERIA

Prize for the Best Architecture Project

- Originality of the proposal and the architectural design, functionality and quality.
- The spatial quality of the grouping, its integration into the surroundings (environmental, visual, social, etc.), its interior/exterior relation.
- Use and implementation of **Pladur®** systems in developing the project, which is essential for the assessment of the proposal.
- Leadership proposals for the **Pladur®** board chosen for the project.
- Viability of the project for execution.

Prize for the Best Construction Solution

Assessment of Best Construction Solution Prize will focus especially on the viability of execution of the proposal and its level of definition in the detail views.

BIM mention

To compete for the BIM mention, a model of the project in IFC format, using the **Pladur® BIM** objects, must also be delivered, along with the rest of the materials. The best use of the **Pladur® BIM** objects in the development of the architectural proposal using BIM methodology will be assessed.

The projects will be assessed using the Solibri IFC model viewer. It is therefore important for all information created in native modelling software, in particular all the **Pladur® BIM** objects used, to be transferred to IFC. Projects not in IFC format will not be assessed.

JURIES

The **Local Prize Jury** will be made up of at least:

- The school director or a person delegated by the former
- A local teacher and/or architect who is not connected to coordination of the competition at the university.
- BIM expert architect or teacher.
- Winning student from the previous year's competition (as long as they are not competing this year)
- Two **Pladur®** representatives, one of whom is the person responsible for the competition, who will not have a vote.
- The competition coordinator/s at each university (without a vote).

The list of coordinators in the participating schools can be viewed in the competition website.

The jury's decision will be final and may declare this phase partially or totally void. The local jury's decision will be laid down in minutes made publicly available once the Iberian Jury has met. At least three projects must be presented at the school/university for the jury to meet and decide on the local prize.

The **Best Architecture Project Prize Jury** will be made up of:

- A representative of the High Council of the Spanish Architects' Association.
- A representative of the Portuguese Architects' Association (Ordem de Arquitectos de Portugal).
- Three architects with proven experience and professional worth.
- Two **Pladur®** representatives, one of whom will act as secretary, without a vote.
- A representative of the prize-winning students for the Best Architectural Solution from the previous year or, in their absence, of the Installation Prize.

Pladur® reserves the right to include in the jury a representative of an official body or another type of specialist in the proposed theme, with the right to vote.

The **Best Construction Solution Prize Jury** will be made up of:

- Six representatives of **Pladur®** installation companies, with the right to vote
- A representative of **Pladur®** who will act as secretary, without the right to vote.

The **BIM Mention Jury** will be made up of:

- Two architects, experts in BIM methodology.
- An expert in BIM object development.
- Technical support for viewing, without a vote.
- A representative of **Pladur®** who will act as secretary, without the right to vote.

PROJECT DESCRIPTION

The current **Pladur® Competition** reflects on the renovation and adaptation of industrial heritage and how architecture must be able to transform and give new life to these industrial buildings.

In the same way as many Spanish and Portuguese wineries are defined as cathedrals and living examples of wine architecture, there is also within our food triad (cereal, olive and vine) the high, imposing **cathedrals of cereals, the SILOS**. These are magnificent buildings for storing grain and other functions associated with cereal production and distribution, integrated into farm buildings which first appeared rising up into the sky in the countryside soon after the 1930s.

Many ports in Europe have silos in equally favourable conditions for incorporation these new uses; excellent views, nearby water, proximity to city centres and the unique nature of their site mean such interventions are sure to succeed.

This is the case of the SILO we have chosen for you, located in the marvellous setting of the port of Matosinhos.

The aim of the current Pladur® Competition is to convert the SILO. Seeking adaptive reuse of an abandoned industrial building in a socio-cultural space.

The cathedral of millet and flax will house the Matosinhos millet and flax museum, thereby creating a meeting space for tradition (the history of millet) and the modern lifestyle the area has acquired in recent years, all within our inherited industrial context.

LOCATION

The Leixões Silos form an agrifood logistics structure, with infrastructure integrated into the Leixões Port perimeter. The main services provided by the silo management company are the transport and storage of grain agrifood products, serving domestic and international traders and the human and animal food industries.

The Leixões silos are in the north-east of the Leixões Port and occupy an area of approximately 25,000 m². The structure is served by road and rail infrastructures.

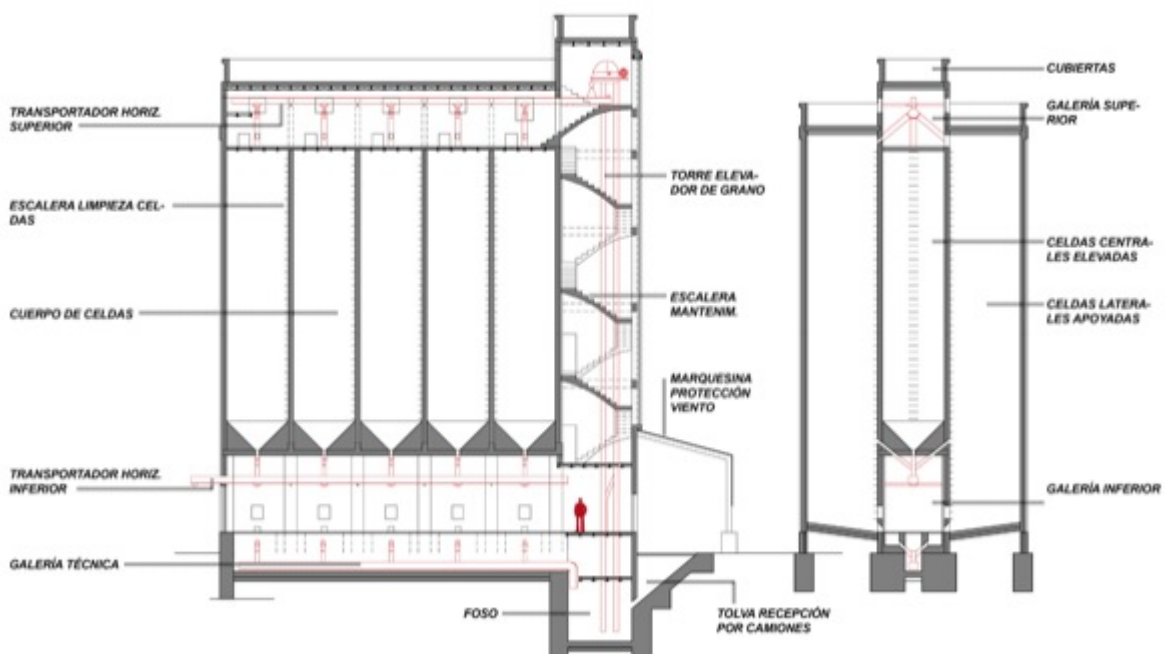
The spaces they house are: storage facilities for agrifood cereals reception, handling and shipping. They include the storage silo, shipping silo, lifting tower, horizontal storage and administrative facilities.

DESCRIPTION OF THE BUILDING

At the entrance to the property are the administrative and control facilities, followed by the storage silo, shipping silo, lifting tower and horizontal storage.

The bucket elevator tower is 95 m high. The storage battery is 65 m from the ground and consists of 13 x 3 circular silos, with a height of 60 m and diameter of 8.20 m. The 5 m internal span permits the contemplation and experience of an industrial unit whose ceiling is cut up with cellular and intercellular gaps, evoking the atmosphere of a cathedral. The light in this space, filtered by suspended dust particles, creates a special atmosphere when combined with the crude, elegant shapes of the concrete structures.

The 5 m internal span permits the contemplation and experience of an industrial unit whose ceiling is cut up with cellular and intercellular gaps, evoking the atmosphere of a cathedral. The light in this space, filtered by suspended dust particles, creates a special atmosphere when combined with the crude, elegant shapes of the concrete structures.



PROGRAMME

1. Assigned use: SOCIO-CULTURAL SPACE

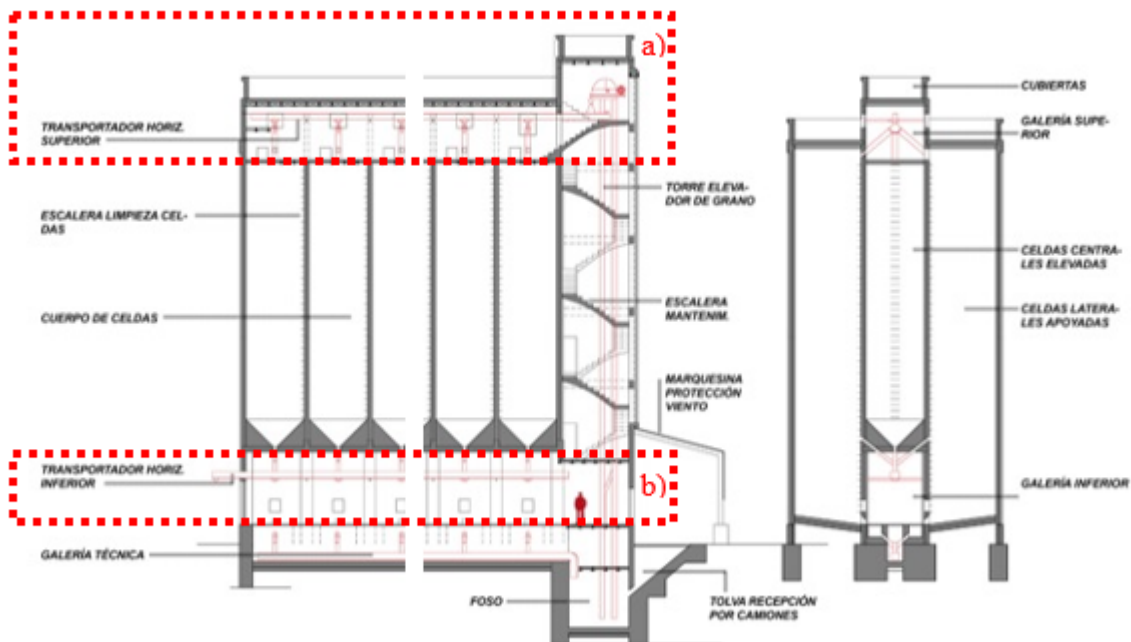
The building will join the Matosinhos MUMA network, housing items from the millet and flax museum. In addition, with the aim of providing greater value for the community, a social space will be created, including: an area for residencies and workshops for artists working in the field of corn and spaces for presenting the resulting work.

The space will include an auditorium, video rooms and temporary and permanent exhibition halls, where the museum corn and flax collection will be displayed. It will also have an educational area for Matosinhos schools and two leisure areas, a restaurant and café, along with support services for each space.

You may modify the façade with an artistic intervention: paintings, vertical gardens, etc.

2. Scale of intervention:

The intervention will involve two spaces, the ground floor and top gallery, and you will have total freedom to create a new access to the top gallery, as the current one cannot provide the necessary service for the new use.



a) TOP GALLERY

Panoramic restaurant.

Pantry, kitchen, waste deposit, support table, dining room for 30/40 people and external balcony, 200 m2

Permanent exhibition rooms,

Exhibition room, 150 m2

Storeroom, 25 m2

Artists' residencies (part 2/2);

5 two-storey rooms with private toilets

4x25/30m2

1 Launderette, 10 m2.

Small multimedia library

Reading space and shelves, 100 m2

Archive, 25 m2

Library reception and office, 10 m2

Male and female public toilets (mixed toilet for reduced mobility users), 40 m2

b) GROUND FLOOR

Reception, 10 m2

Foyer/large hall, action space such as a free definition public square

Artists' residencies;

• 5 workshops, x35 to 50 m2

• Storage room, 5x10 m2

• 1 Launderette, 10 m2

• 1 Mixed toilet, 15 m2

Temporary exhibition room,

• Temporary exhibition room, 200 m2

- Support storage, 50 m2

Mixed public toilet, 50 m2

Black box room (small video room for presenting experimental art, theatre and dance productions with few actors and projecting videos from the ethnographic archive related to corn production and artists). Capacity of 70 seats, including 2 for reduced mobility users: approximately 120 m2

Digital archive

- Viewing room, 40 m2
- Storeroom, 10 m2

Auditorium/concert hall

Small multi-use concert hall. Room for presenting experimental art, theatre and dance productions with few participants presenting ethnographic activities related to corn production.

Capacity of 100 seats, including 2 seats for people with disabilities.
Auditorium, 180m2; Control booth, 6m2; Dressing room, 9m2; Toilet, 4m2;
Storeroom, 12m2

Café hall

Hall, 120m2; Kitchen/ pantry, 30m2; Storeroom, 25m2; Mixed and reduced mobility toilets, 14m2; Staffroom, 14m2

This space may be located in the top gallery or on the ground floor.

Administrative area (1 director and 2 employees)

- 3 offices 15 m2
- 1 meeting room, 10 m2
- 1 mixed toilet, 8 m2

Services

Waste deposit, 20 m2; Machine room, 40 m2; 2 Service toilets/changing rooms, 15 m2; 1 men's and women's toilet (including people with disabilities); Public toilet (including people with disability), 50 m2; Storage facility for the foyer and studio/ multi-use hall, 20 m2; Service and technical area, 18 m2 (2 x 9m2); Loading and unloading room, 30 m2.

C) ACCESS TO THE TOP GALLERY

You will be free to create a new access to the top gallery from the ground floor.

In this case, there will be no limits and you will be free to intervene in the existing building.

The square metres assigned to each area are for guidance, but never obligatory.

SUPPORT MATERIAL

Pladur® will provide full information for participants on the specially created website: www.concursopladur.com.

Participants can also obtain information from our social media or by sending an email to concurso@pladur.com for any doubts or queries they may have.

PROJECT DELIVERY

The designs must be uploaded to the **Pladur®** digital platform no later than midnight on 23 APRIL 24.00h. No further projects will be accepted after this date.

The date, place and format for the delivery of the projects for local selection will be decided by the schools and must be publicly announced at the presentation of the competition. The date on which the local jury meets will be set by the schools, always bearing in mind the deadline established by **Pladur®**.

The dates for delivering the projects at each of the universities will be published on the **Pladur®** website, once the competition organisation has been informed.

AWARDS CEREMONY

All prizes will be awarded during the ceremony to be held at the place and time to be announced in the future. The winners of the 'First Local Prize' (not the second prize), the three best local BIM prizes (as decided by the BIM jury) and the local and jury coordinators will be invited to the ceremony.

Students may give a short public presentation of the winning project at the awards ceremony. A representative of the previous year's winners will also be invited, as long as they are not participating in this year's competition, and will present the prize to the new winners, thus creating a thread connecting one year's competition to the next.

PRESENTATION TERMS AND CONDITIONS

Two files must be uploaded to our competition website (guidelines will be provided later on):

– **One that includes the following information:**

- A PDF file (minimum resolution 150 pixels per inch) for each A2 plan presented (maximum of 4 A2 vertical format panels).
- The plans must not include: the name, code or university of the participants.
- Each plan must be numbered and have the project title clearly indicated in the top right-hand corner.

– **A second file, containing:**

- An A4 document clearly identifying the title and the personal details of each participant (full name, school, code, email address, home address, postcode, national tax ID no., nationality and contact telephone no.). A short CV of each member of the team in Word format with a photo of the team members in jpg or png. All in the same file.

In total, only **TWO files** may be uploaded. Per team. Any extra files will not be considered.

LEGAL ASPECTS

- **Pladur®** may declare projects null and void if they do not contain all the requested details, including the registration code or if they fail to meet any of the established technical assessment criteria.
- All prize-winning projects in any phase of the competition will become property of **Pladur®**.
- **Pladur®** will ask all winners for the details required for payment (name, national ID number, bank certificate) by email. The date for requesting the details will be prior to the awards ceremony and will expire after one month, of which the winners will be duly informed. Once the period for receiving these details has expired, the prize money will be paid by bank transfer, excluding those who have not provided the details in the period and form required.
- Any winner in any of the previously mentioned categories who does not receive their prize in the indicated times may claim it in writing from concurso@pladur.com. The right to claim the prize will expire in the month of December of the year in which the prize winners are chosen.
- Notwithstanding recognition of the authorship of the projects and the corresponding rights, the prize winners authorise **Pladur®** to publish and disseminate the prize-winning projects by any means, jointly or individually, transferring to **Pladur®** all intellectual property rights the publications may generate, with no geographic or time limits, with

regard to which the transferor may not claim remuneration of any kind, monetary or otherwise.

- For its commercial and promotional activity, **Pladur®** will create a database of people and documents received, with regard to which the interested parties may exercise their rights of access, rectification, erasure and opposition in compliance with the European General Data Protection Regulation and other application regulations.
- All persons attending the Awards Ceremony, representatives of the media, jury members and representatives of the participating schools or faculties accept and authorise **Pladur®** to publish and disseminate, for strictly promotional and advertising purposes, the images and photographs produced in the ceremony, for which the transferors may not claim remuneration of any kind, monetary or otherwise.