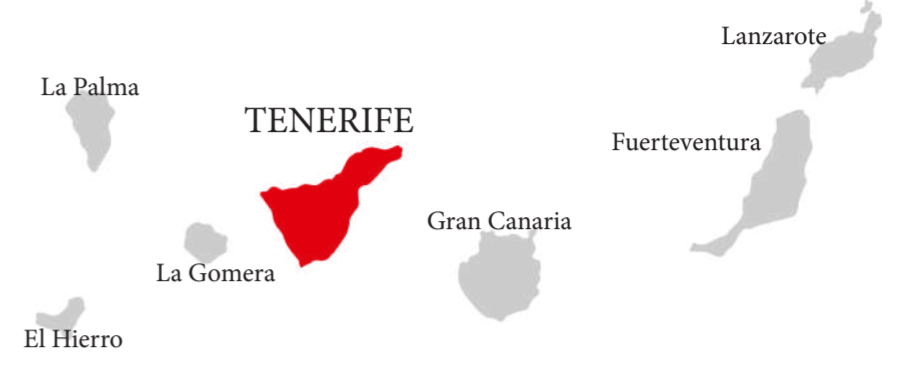
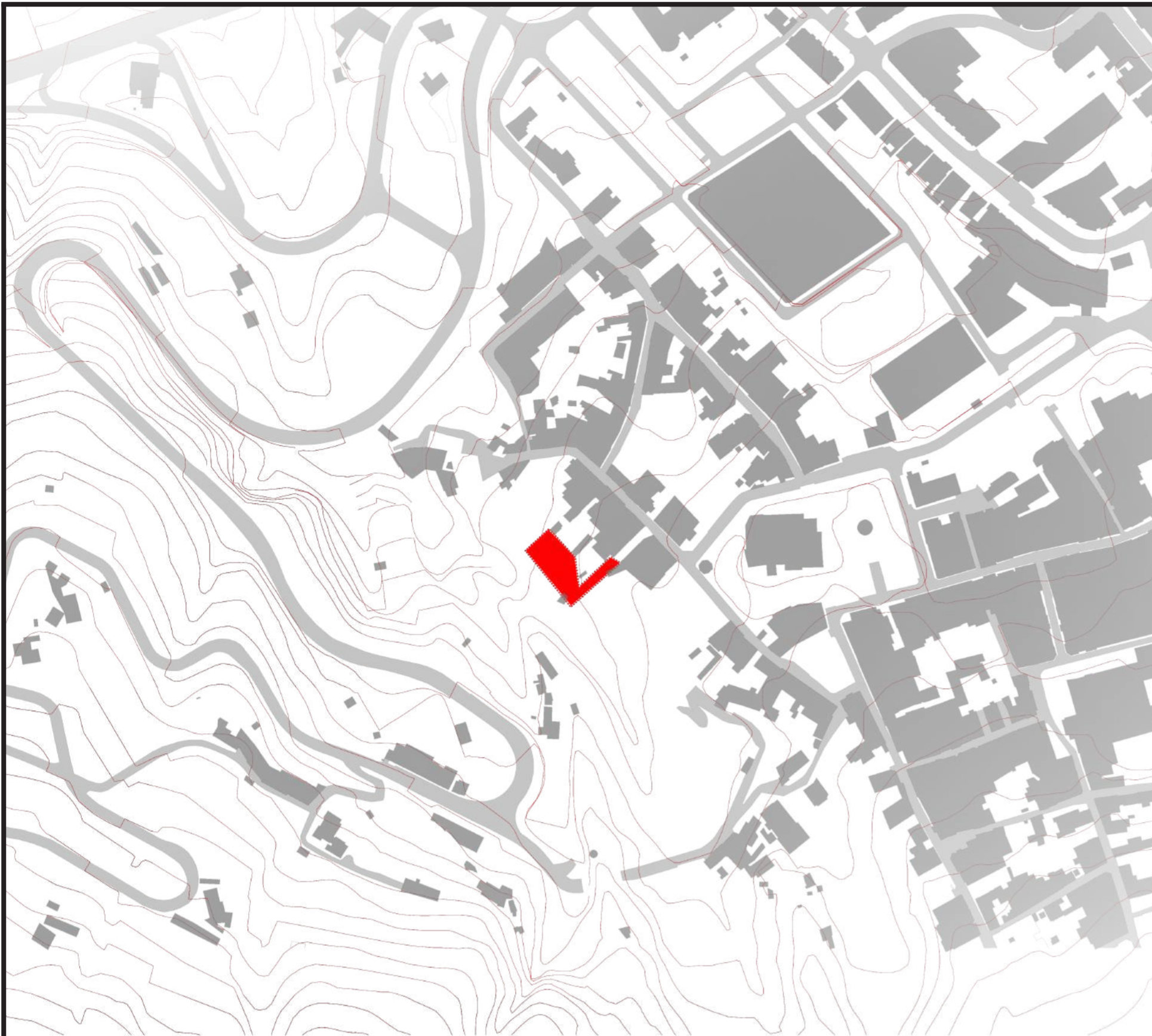


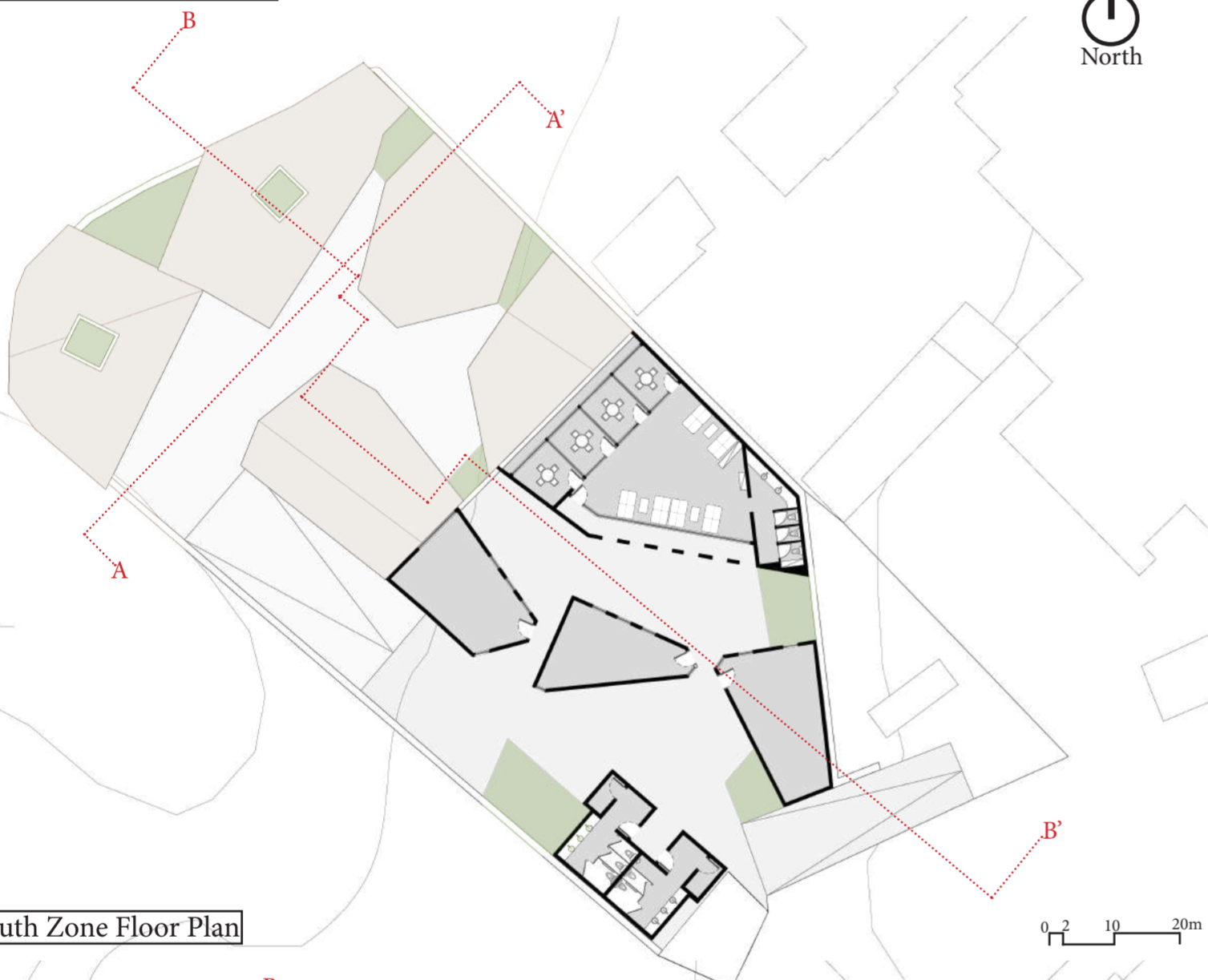
# 01 THE STONE SHELTER



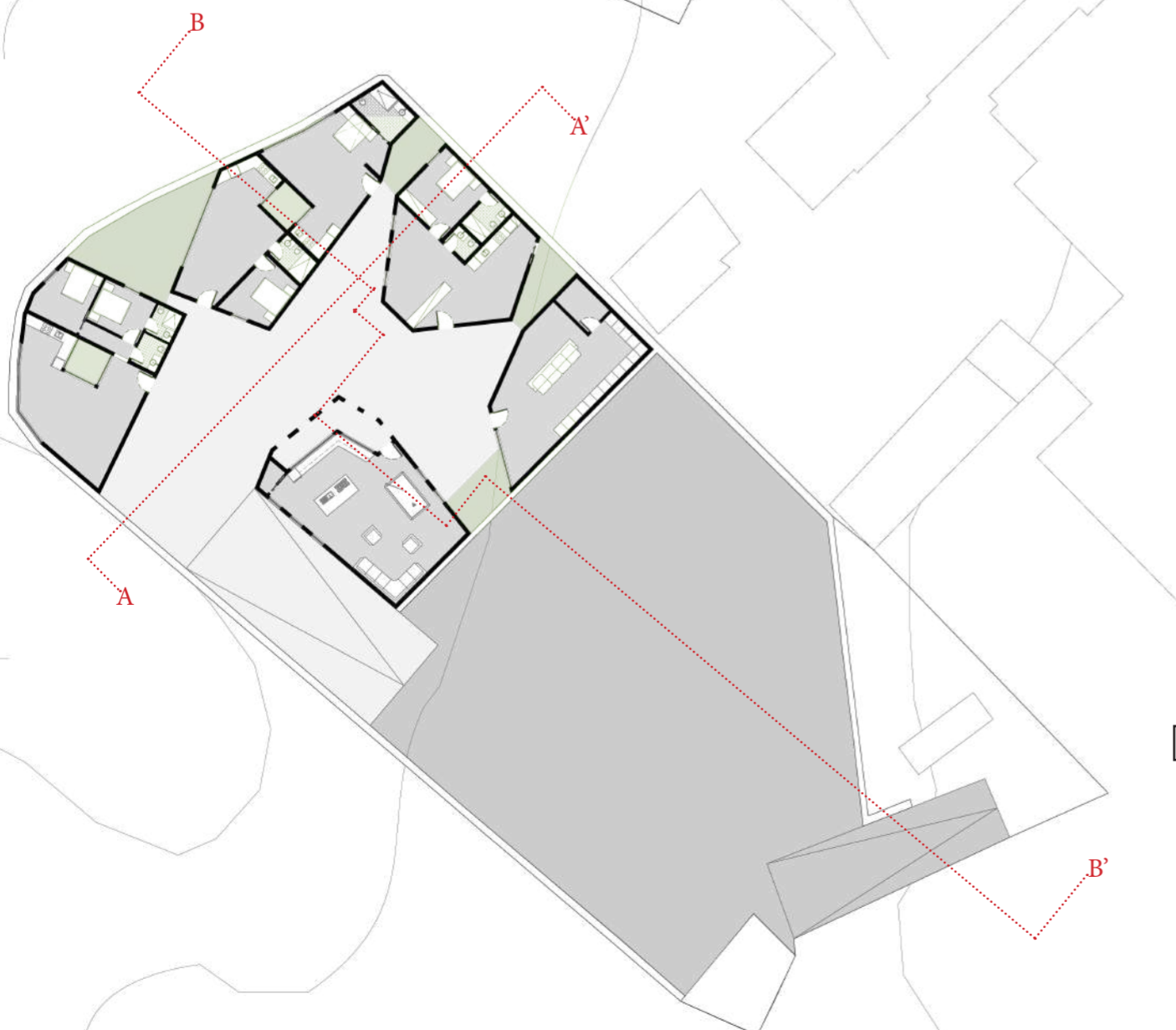
## The past – the future

The urban center of Icod de los Vinos, an area in the north of the island of Tenerife, is permanently stable, brought by the comfort between the past and the present. by a fire in 1798 and carefully rebuilt to take advantage of the green areas. Characterized by a low-density urban fabric consisting of buildings of traditional Canarian architecture from the 18th century. Millennial; A unique plant species in the Canary Islands, one of the most important natural, cultural and historical symbols. Analyzing a broader scale, we will find the famous Teide Volcano, with approximately 7500m high above the ocean floor, the highest peak in Spain and Atlantic islands and is also the 3rd largest volcano in the world from its base. It is known that the eruptions of Teide are ancient, and that they marked the present relief of Tenerife. And it is to this past that we begin to project our future.

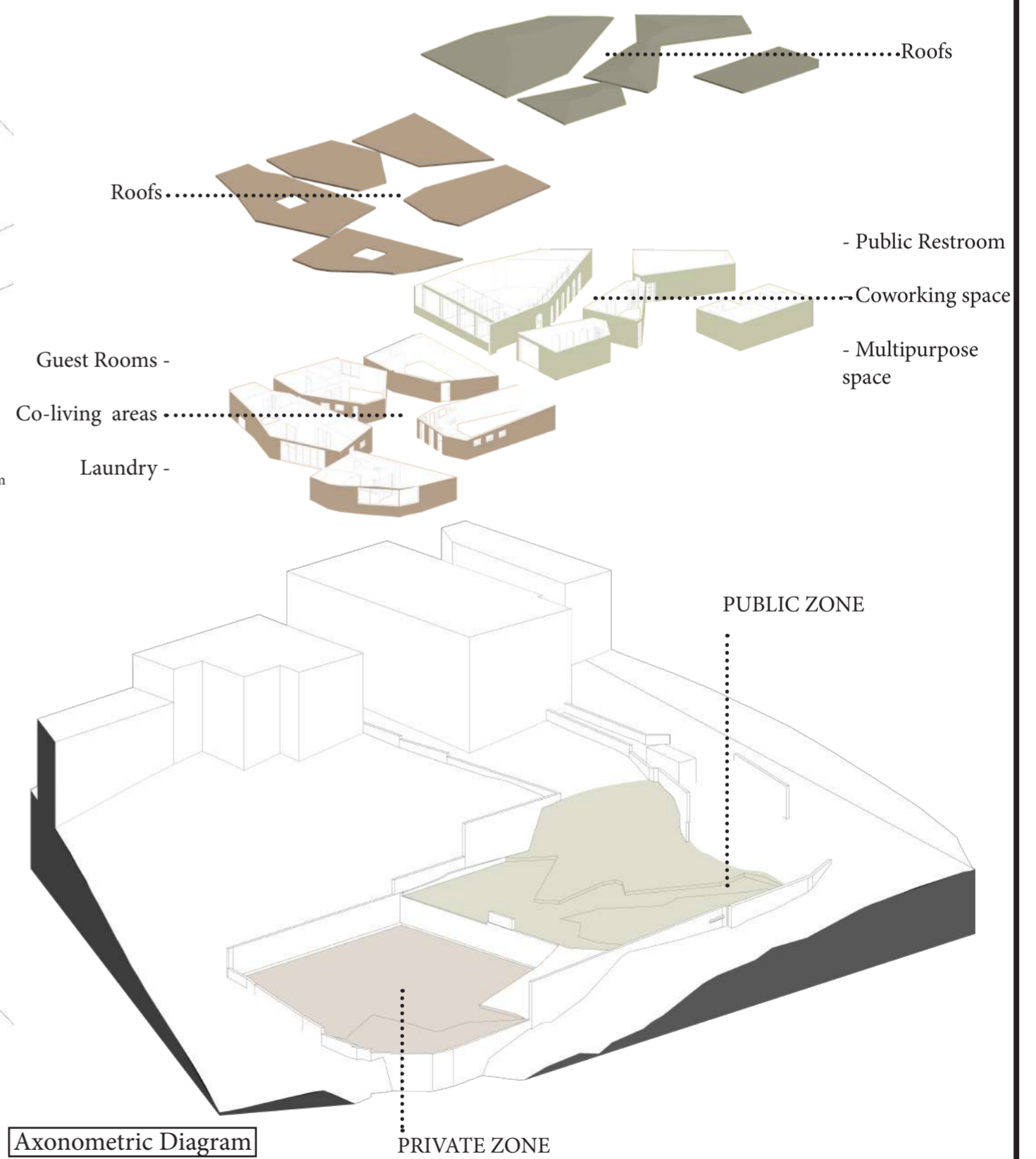
Site Plan \_ scale: 1/2000



South Zone Floor Plan



North Zone Floor Plan



Axonometric Diagram

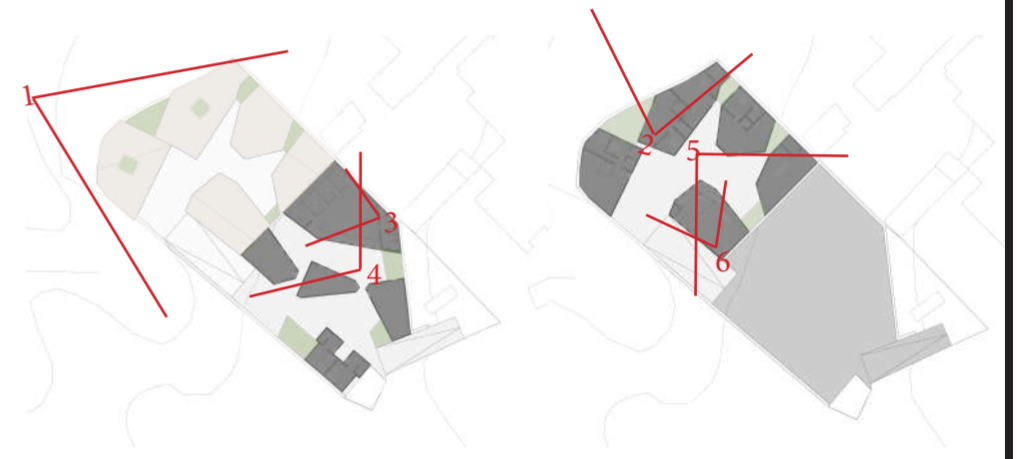




# 02 THE STONE SHELTER

## The monumental – the ordinary

A garden of endemic species was created around the Tree, which is especially enriching and illustrative for visitors. We face the spatial challenge as a transformation of the common into the monumental. The urban center has been declared an Asset of Cultural Interest, the category of historical set since 2004. As the act of valorization/preservation of its culture and identity increases its substantial value, it becomes a symbol that receives commemorative meaning. While Parque Del Drago celebrates the commemorative meaning as a differentiated monument, the proposal proposes an alternative interpretation of the confrontation between the common and the monumental: Apposition. The proposal of the common is captured in the form of the monumental, where both are given commemorative significance, where the unrecognized common becomes as memorable as the monumental.



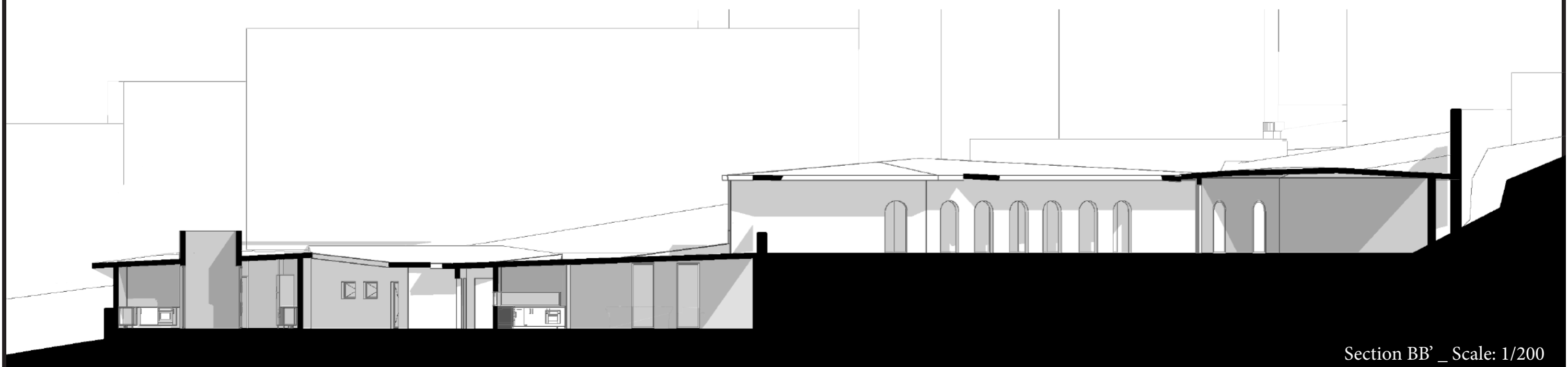
1 - Site Plan Perspective



2 - Guest House / Living Room



3 - Coworking Space



Section BB' \_ Scale: 1/200



# 03 THE STONE SHELTER

## The detached – the monumental

The village's landmarks are organized according to the topography, and the location of our land and the strong geometric shapes do not separate us from the spatial fabric of the urban center. Flint is a collage collage of adaptively used sloping roof houses, buildings with walls clad in volcanic stone/flint, once a tool for the development of the human being, today it is used here as a shelter tool. And return/extend this collage of the urban center. From Icod de los Vinos to our proposal for complementary buildings to Parque del Drago, it is at this moment that a new spatial condition is produced.

## The appreciated – the experienced

The intervention zone has already suffered human interventions and as a result, there are two moments on the ground, due to earthworks. Where we divide the program into: private zone and public zone. In the private area, the following were proposed: rooms for guests, a laundry room, kitchen and a common living space; and in the public area: the public restrooms, the co-working space and the multipurpose rooms. The entire open space turns into patios to host its respective audience. The spaces were made to be experienced as a consequence of the moment and in the form of common encounters. Access is made through the natural unevenness of the place. The Flint was designed to be an extension of the monument that is El Drago, protected, controlled and to be seen. without forgetting the ocean, the volcano and its ravines.



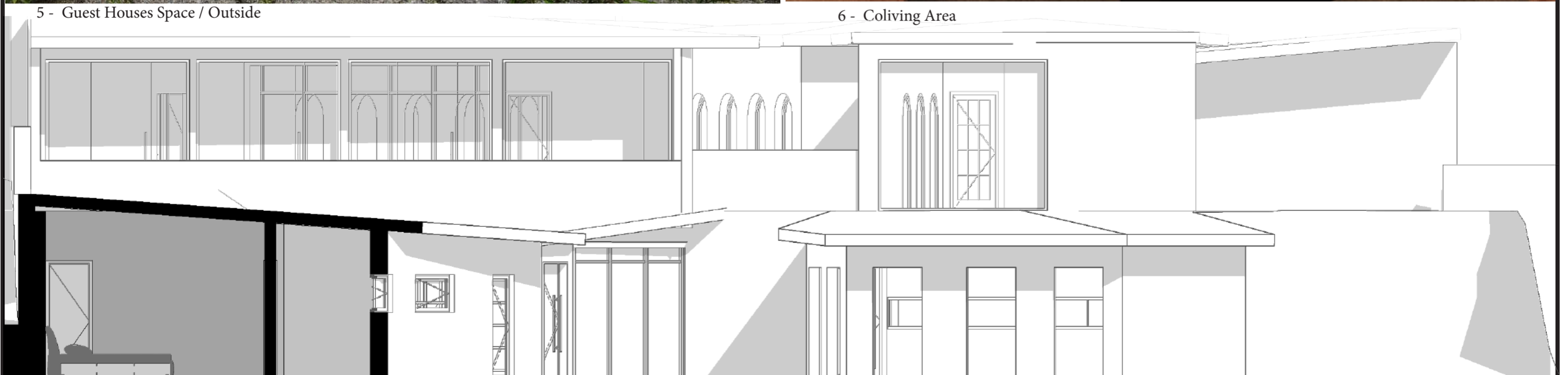
4 - Coworking Space / Outside



5 - Guest Houses Space / Outside

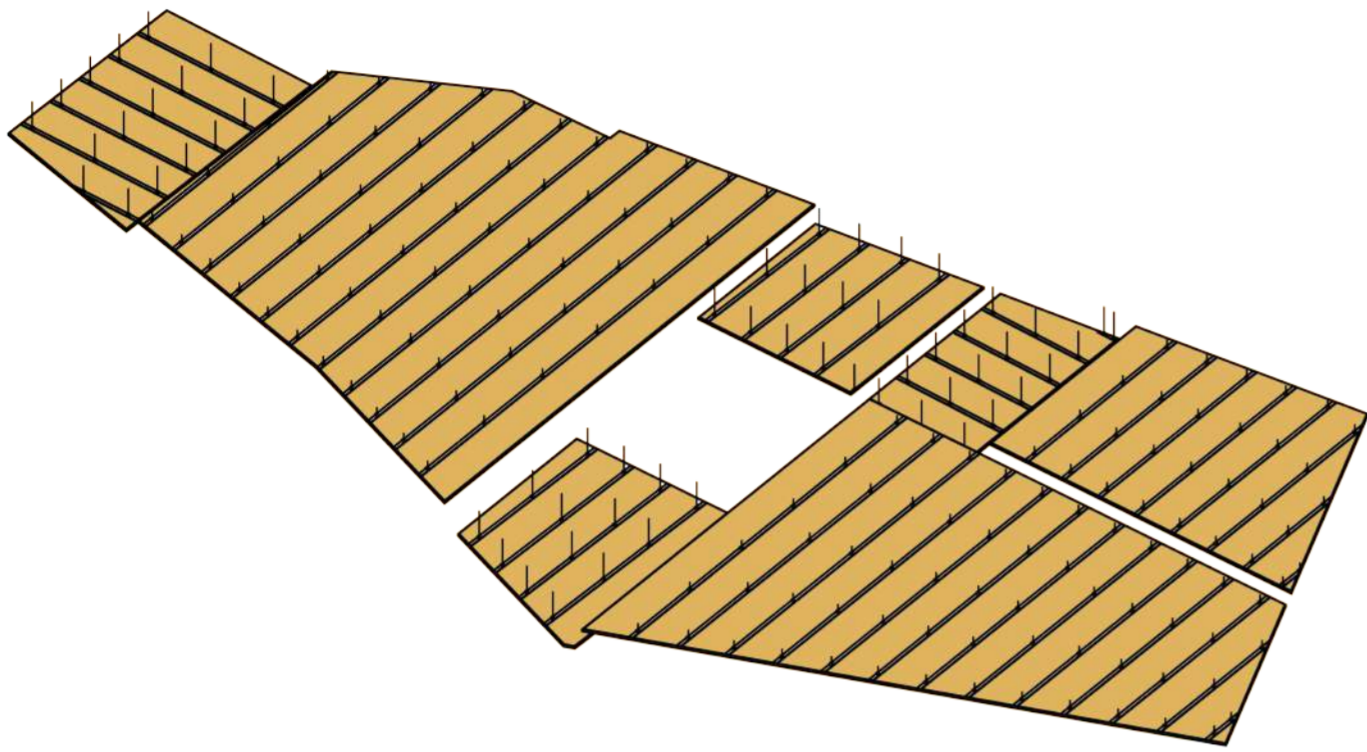


6 - Coliving Area

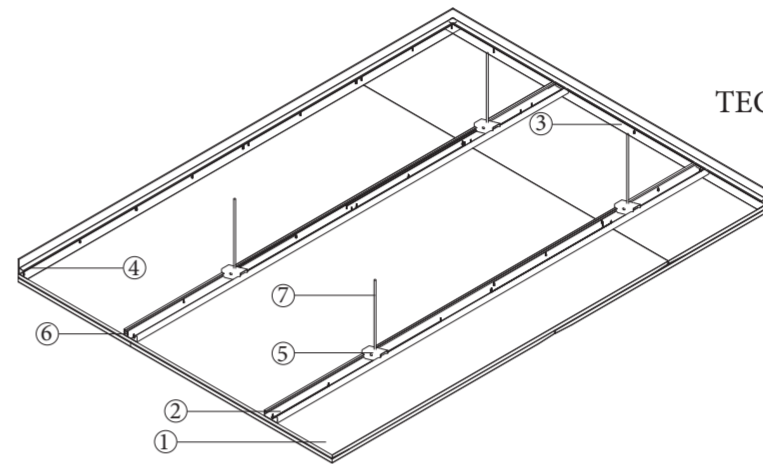




# 04 THE STONE SHELTER



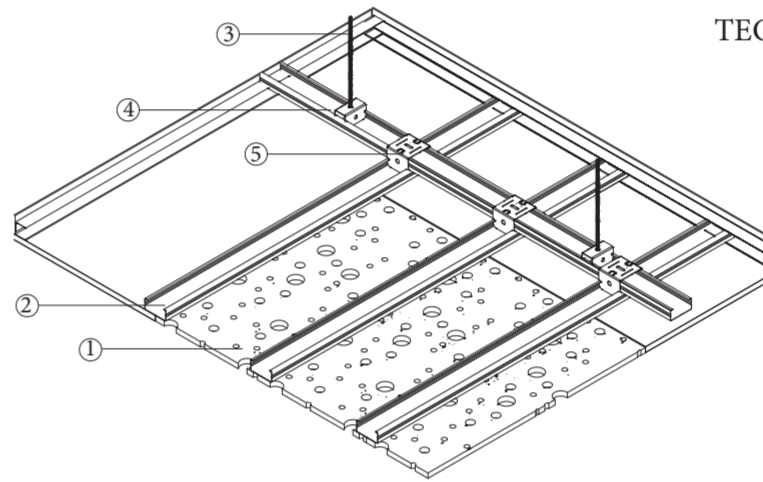
TECHO SUSPENDIDO TIPO FON



1. PLACA PLADUR\*\*
2. PERFIL PLADUR\* T-60
3. PERFIL PLADUR\* U
4. HORQUILLA PLADUR\* T-60
5. ABRAZADERA PLADUR\* T-60

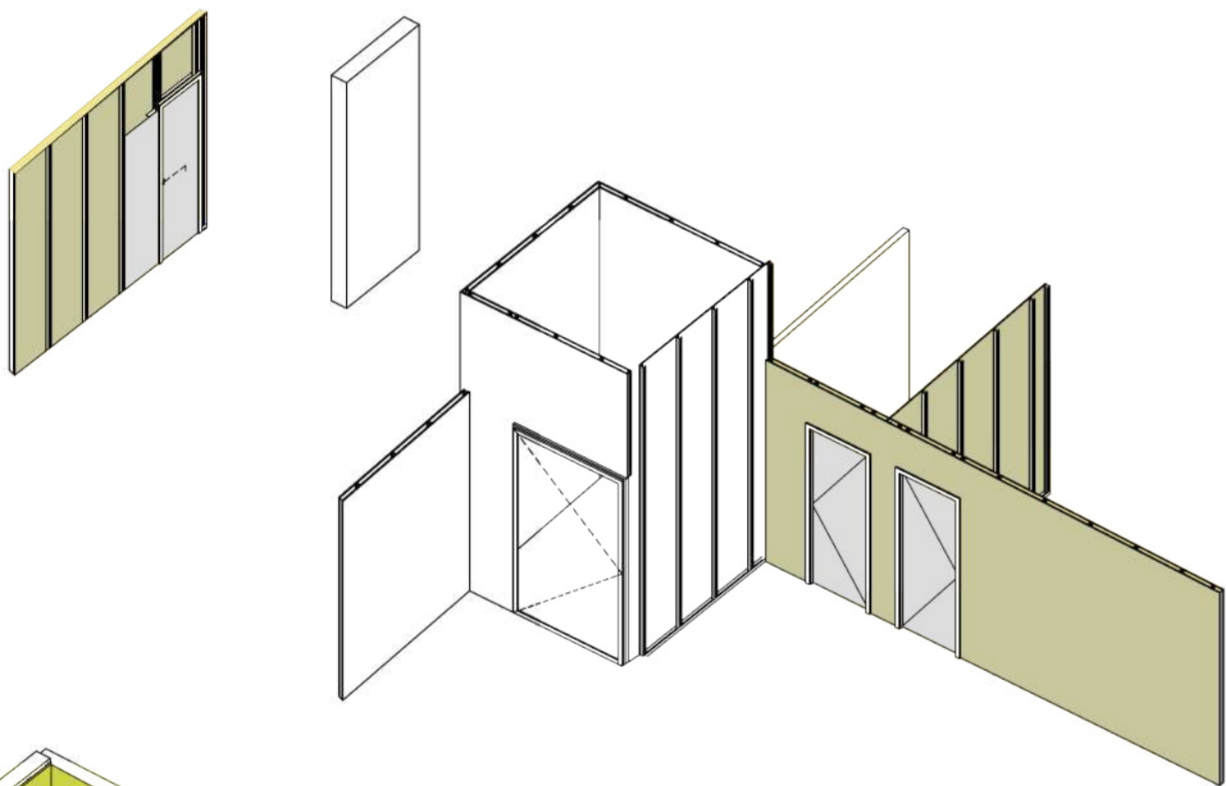
\*\*techo suspendido con placa de pladur utilizado en viviendas

TECHO SUSPENDIDO TIPO FON

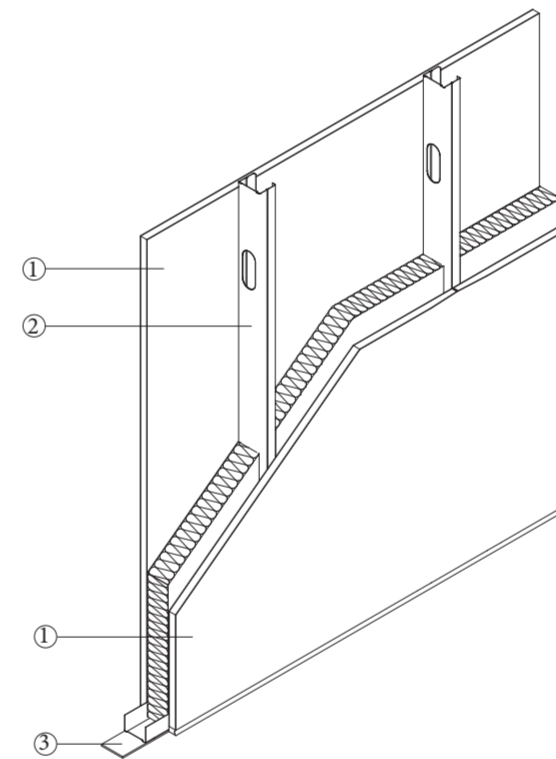


1. PLACA PLADUR FON\*+\*\*
2. PERFIL PLADUR\* T-60
3. PERFIL PLADUR\* U
4. HORQUILLA PLADUR\* T-60
5. ABRAZADERA PLADUR\* T-60

\*Depende de la zona y el uso se utilizara Flexform para falsos techos ondulados, FON para zonas comunes o Ultra-L-Tec para zonas comunes formadas a partir de elementos constructivos de las pop-up [no hay necesidad extra térmica o acústica, ya que es aportada por la pop-up]

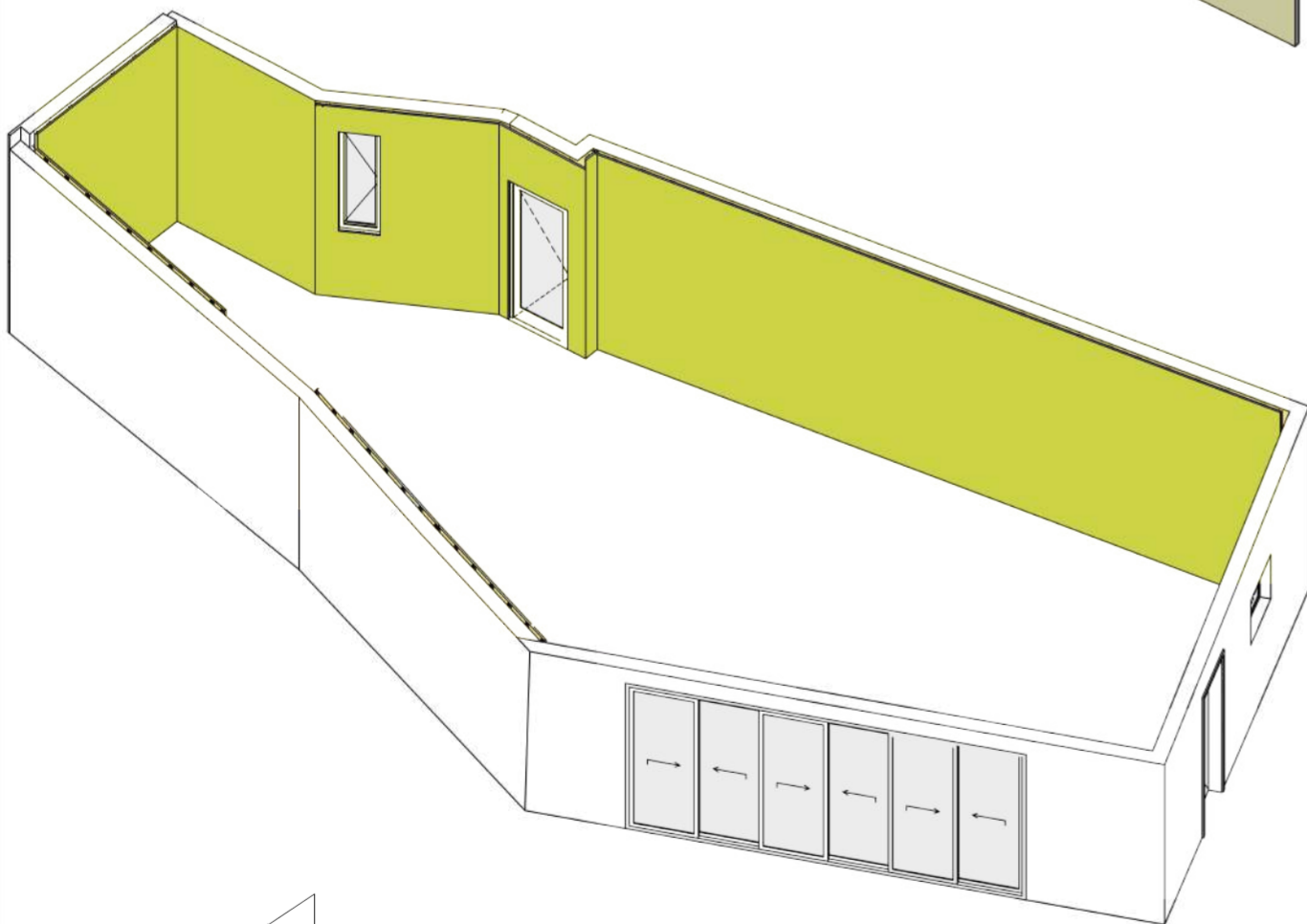


TABIQUES DE DISTRIBUCIÓN

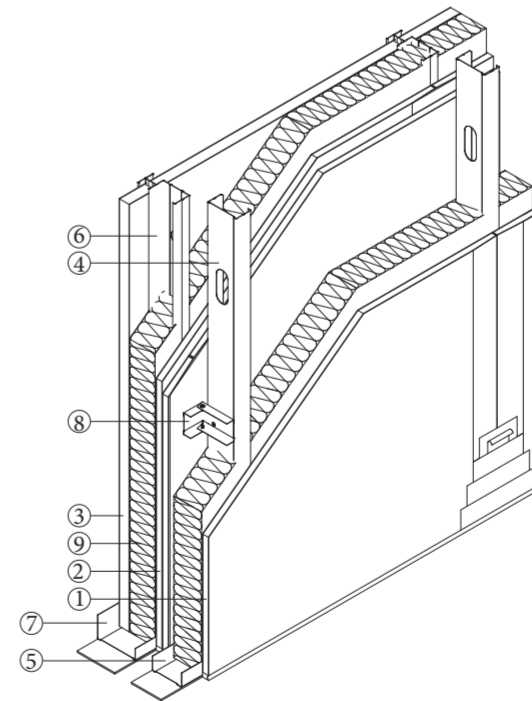


1. PLACA PLADUR\* OMNIA\*
2. MONTANTE PLADUR\*
3. CANAL PLADUR\*

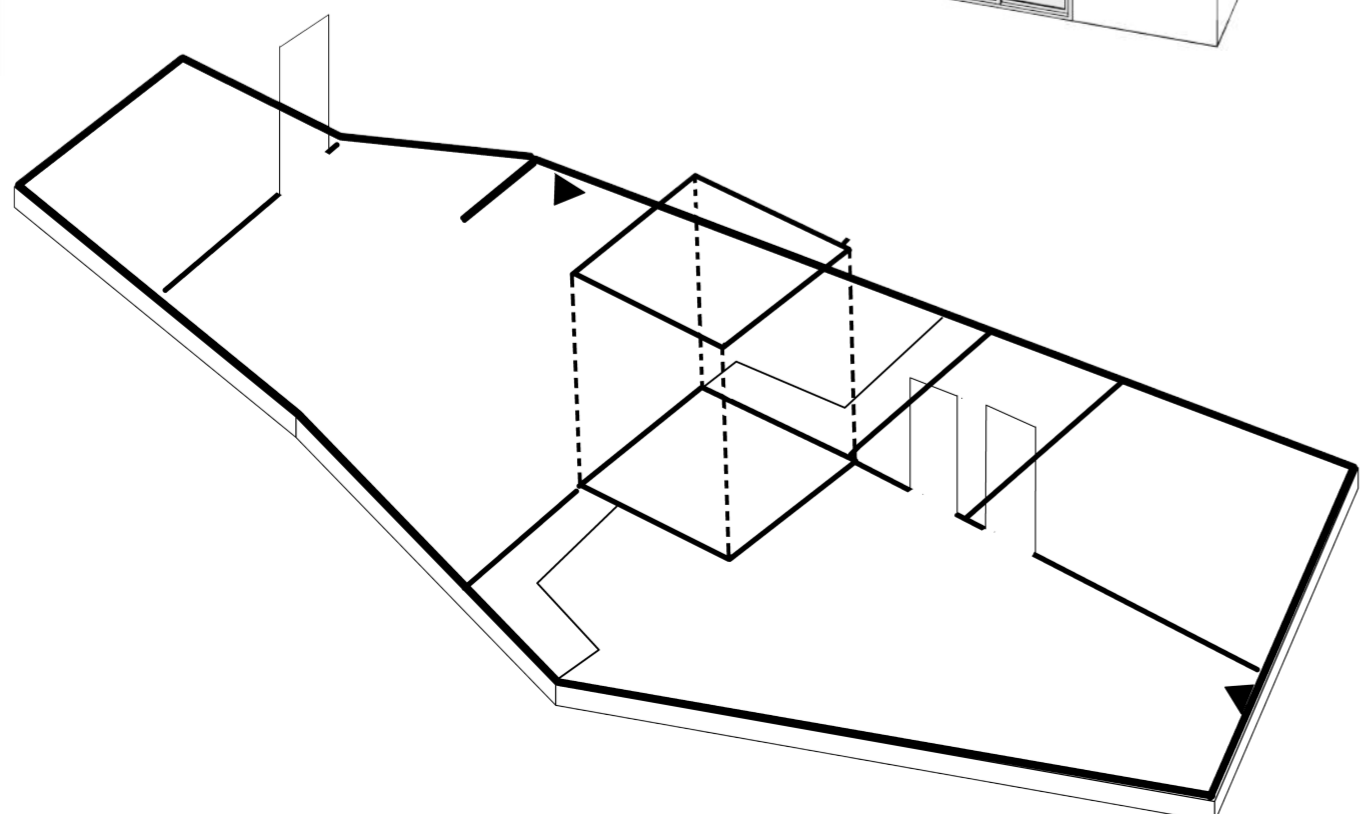
\*Placas omnia para bloque servicios (cocina y baño) y placa N estandar para tabiques de distribución.



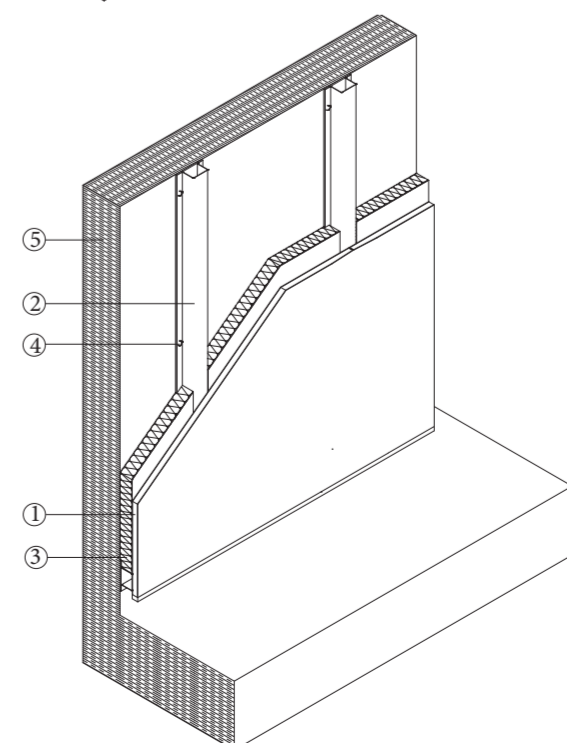
SISTEMA ESPECIAL MURO EXTERIOR POP-UP



1. TABLERO OSB 40mm
2. PLACA PLADUR\* F
3. PLACA PLADUR\* CH
4. MONTANTE PLADUR\*
5. CANAL PLADUR\*
6. MONTANTE PLADUR\* CH-90
7. CANAL PLADUR\* J-92
8. ARRIOSTRAMIENTO CANAL
9. LANA MINERAL



SISTEMA DE TRASDOSADO PARA EL MURO DE CONTECIÓN CON MAESTRAS ANCLADAS DIRECTAMENTE



1. PLACA PLADUR ENAIRGY\* ISOPO
2. MAESTRA PLADUR\* MT 70x30
3. LANA MINERAL
4. FIJACIÓN A SOPORTE
5. SOPORTE MURO DE CONTECIÓN